

Manson School District - Current Board Districts as
Approximated Using Census 2020 Geography

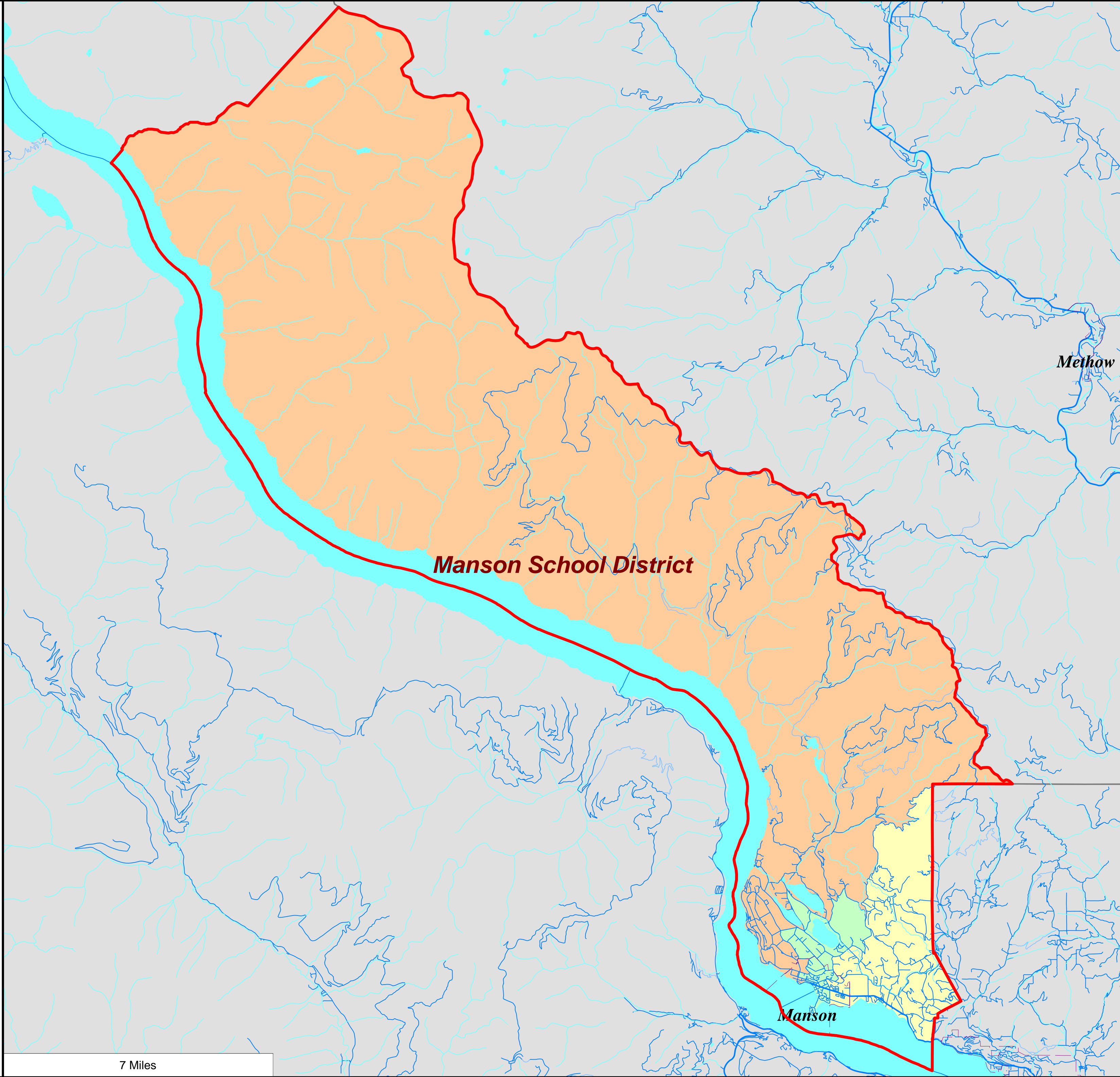
1st District

2nd District

3rd District

City Limits

District Outline



Manson School District

Methow

Manson

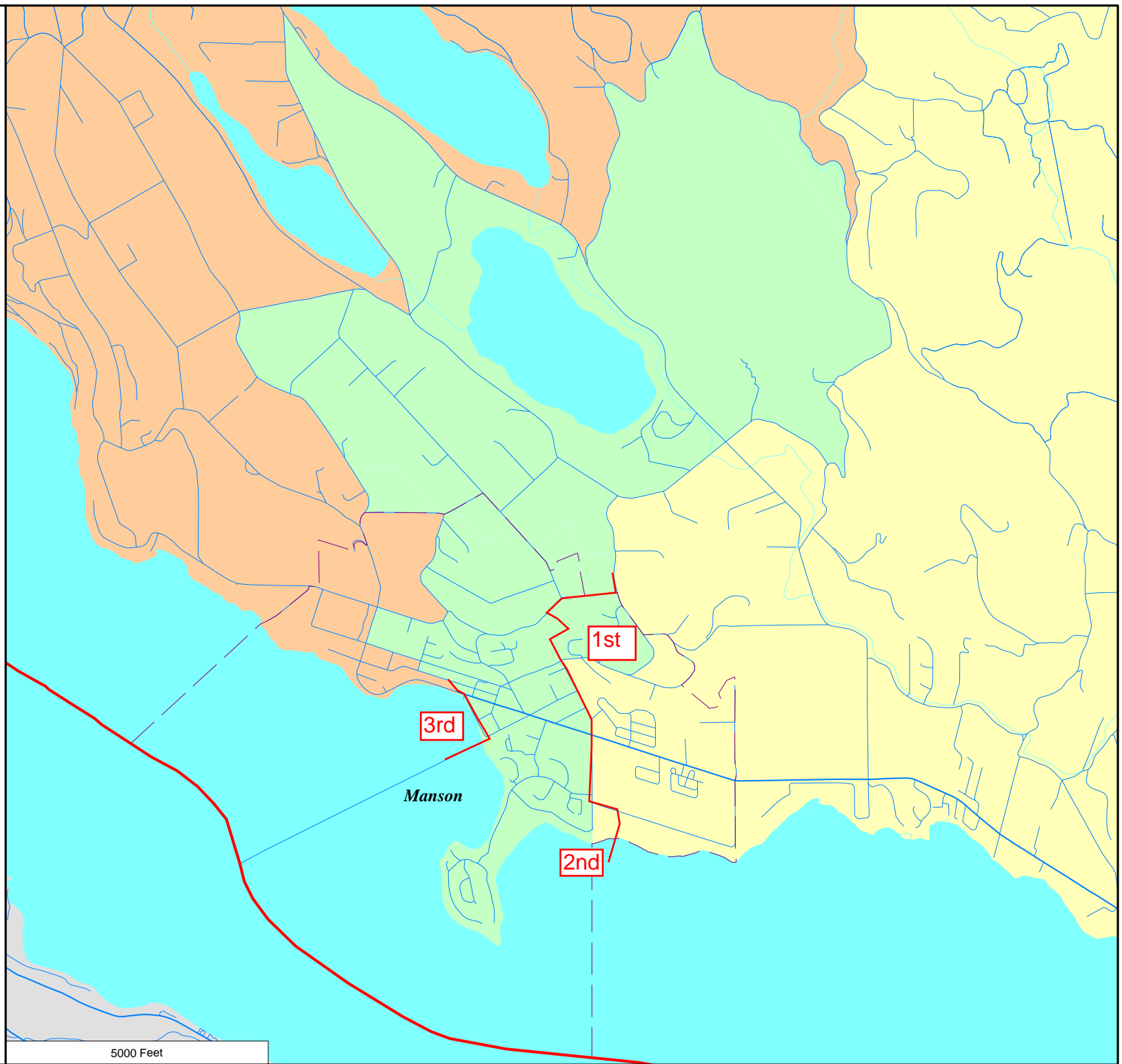
7 Miles

Manson School District -
Current Board Districts as
Approximated Using
Census 2020 Geography

- 1st District
- 2nd District
- 3rd District

City Limits

District Outline



Manson School District District Summary Report

Director District Number	Ideal Population	Total Population	Deviation from Ideal	% Deviation from Ideal	White Population	Hispanic Origin (of any race)	Non White & Mixed
1st	1,256	1,439	183	14.57	896	537	543
2nd	1,256	1,024	-232	-18.47	681	342	343
3rd	1,256	1,304	48	3.82	824	457	480
Totals.....		<u>3,767</u>	<u>-1</u>		<u>2,401</u>	<u>1,336</u>	<u>1,366</u>

Manson School District

Summary of Population by Race and Hispanic Origin

District Number	Total Population	Total Population by Race							Two or More Races	Hispanic Origin (of any race)
		Single Race								
		Total	White	Black African American	American Indian and Alaska Native	Asian	Native Hawaiian and Other Pacific Islander	Other Race	Total	
1st	1,439	1,241	896	3	8	4	0	330	198	537
2nd	1,024	929	681	2	5	1	1	239	95	342
3rd	1,304	1,143	824	0	6	8	0	305	161	457
Totals.....	<u>3,767</u>	<u>3,313</u>	<u>2,401</u>	<u>5</u>	<u>19</u>	<u>13</u>	<u>1</u>	<u>874</u>	<u>454</u>	<u>1,336</u>